

NETSIMULATOR VOLTAGE ADAPTOR



Overview

The NetSimulator Voltage Adaptor is used to generate real voltage from simulated signal in 3phase power networks. It can be used together with Multipurpose IED, Relay Protection and other devices.

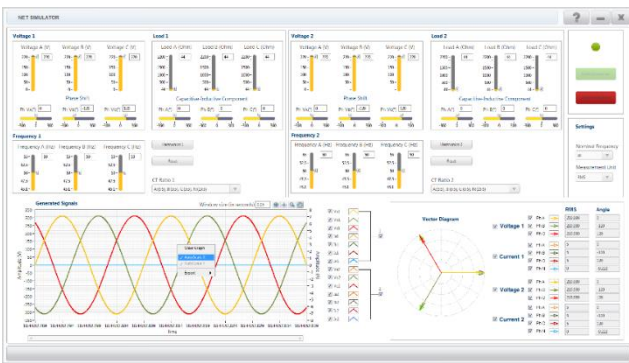
Specifications

Parameter	Value
Inputs	
Number of Input Channels	3ch, +/-10 VAC
Input Signal	7V RMS
Input Frequency Range	45 – 65 Hz
Input Network Type	50/60 Hz
Input Waveform Type	Sinewave, DC
Outputs	
Number of Output Channels	3
Output Signal	220V RMS
Accuracy	1%, $\pm 2.2V$ (after warm-up time)
Output Frequency Range	45-65 Hz
Output Network Type	50/60 Hz
General	
Supply Voltage	240 VAC $\pm 2\%$ stabilized grounded network, 50/60 Hz
Power Consumption	300 W (maximum)
Bandwidth	3.84 kHz, 64 th order for 50/60Hz networks
Operating Temperature	15°-25° C
Warm-up Time	10 min
Base Enclosure	Steel
Form Factor	Rack mount, 4U
Environment	Indoor use

Hardware Pictures



Software Screenshots



HARMONICS and INTERHARMONICS 1

Harmonics and Interharmonics

	0	Level(V)	0	Level(V)	0	Level(V)	0	Level(V)	0	Level(V)
VA	0	Phase (*)	0	Phase (*)	0	Phase (*)	0	Phase (*)	0	Phase (*)
	0	Order	0	Order	0	Order	0	Order	0	Order
	0	Level(V)	0	Level(V)	0	Level(V)	0	Level(V)	0	Level(V)
VB	0	Phase (*)	0	Phase (*)	0	Phase (*)	0	Phase (*)	0	Phase (*)
	0	Order	0	Order	0	Order	0	Order	0	Order
	0	Level(V)	0	Level(V)	0	Level(V)	0	Level(V)	0	Level(V)
VC	0	Phase (*)	0	Phase (*)	0	Phase (*)	0	Phase (*)	0	Phase (*)
	0	Order	0	Order	0	Order	0	Order	0	Order
	0	Level(V)	0	Level(V)	0	Level(V)	0	Level(V)	0	Level(V)

Apply

