

SUBSTATION AUTOMATION TRAINER



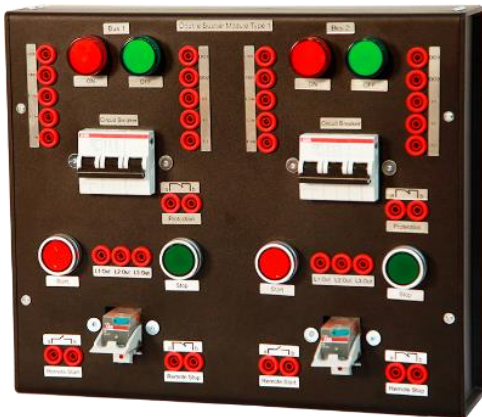
Overview

The Substation Automation Trainer is a small model of a distribution substation. It includes small scale modules for switchgears, busbars, circuit breakers, transformers and loads. It allows to study basics of substation automation system. It allows to investigate how the monitoring and control (RTU) system is implemented in hardware using NI myRIO platform. The educational trainer is a part of a real SCADA system.

Features

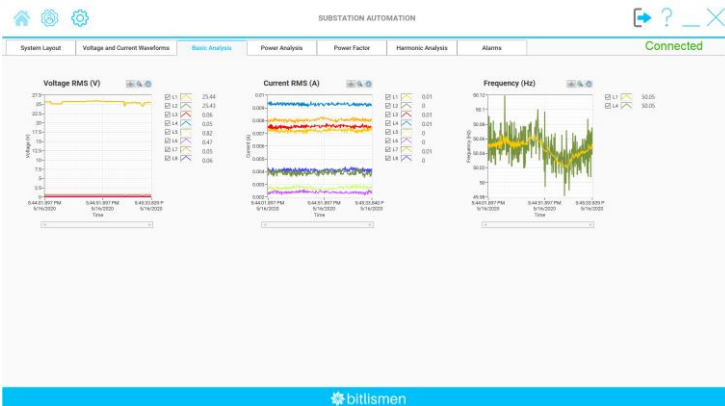
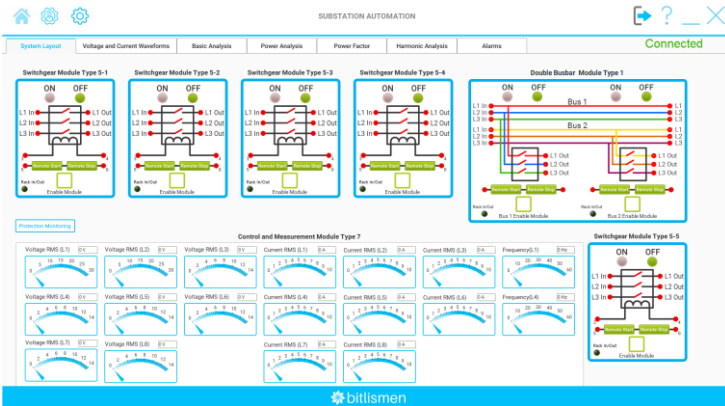
- ✓ Power distribution monitoring and control
- ✓ Fault protection in power distribution
- ✓ Remote control of switchgears
- ✓ Power measurement and quality analyses
- ✓ Alarms and Events Handling in SCADA systems

Substation Automation Trainer Hardware Pictures





Substation Automation Software Screenshots



System Layout | Voltage and Current Waveforms | Basic Analysis | Power Analysis | Power Factor | Harmonic Analysis | Alarms | Connected

Alarms and Events

PRIORITY	SITE NAME	ALARM AND EVENT NAME	AREA	DESCRIPTION	THRESHOLD	SET VALUE	SET USER	SET TIME	ACK USER	ACK COMMENT	ACK TIME	CLEAR TIME
0	Substation 4	ControlPanelSubstation out amperage(M_2_Cat_Low)		Value Change off	0.00000	0.00000	SubstationUser	14 May 2023 17:02:41				
0	Substation 4	ControlPanelSubstation out amperage(M_2_Busbars_Cat_High)		Value Change off	0.00000	0.00000	SubstationUser	14 May 2023 17:02:41				
0	Substation 4	ControlPanelSubstation out amperage(M_2_Cat_Low)		Value Change off	0.00000	0.00000	SubstationUser	14 May 2023 17:02:41				
0	Substation 4	ControlPanelSubstation out amperage(M_2_Cat_High)		Value Change off	0.00000	0.00000	SubstationUser	14 May 2023 17:02:41				
0	Substation 4	ControlPanelSubstation out amperage(M_2_Cat_Low)		Value Change off	0.00000	0.00000	SubstationUser	14 May 2023 17:02:41				
0	Substation 4	ControlPanelSubstation out amperage(M_2_Cat_High)		Value Change off	0.00000	0.00000	SubstationUser	14 May 2023 17:02:41				
0	Substation 4	ControlPanelSubstation out amperage(M_2_Cat_Low)		Value Change off	0.00000	0.00000	SubstationUser	14 May 2023 17:02:41				
0	Substation 4	ControlPanelSubstation out amperage(M_2_Cat_High)		Value Change off	0.00000	0.00000	SubstationUser	14 May 2023 17:02:41				

bitlismen